

All Rights Reserved. Reuse of these documents without the expressed written permission of Carmina Wood Morris, DPC is prohibited. WARNING: It is a violation of article 165 sections 7202N and 7301 of the New York State Education Law for any person, unless acting under the direction of a registered architect licensed in the State of New York, to prepare, create, reproduce, copy, alter, modify, adapt, amend, or otherwise use any drawing, plan, specification, or schedule prepared by, and a specific description of the alteration.

© Carmina Wood Morris
DPC

3/30/2018 10:44:16 AM

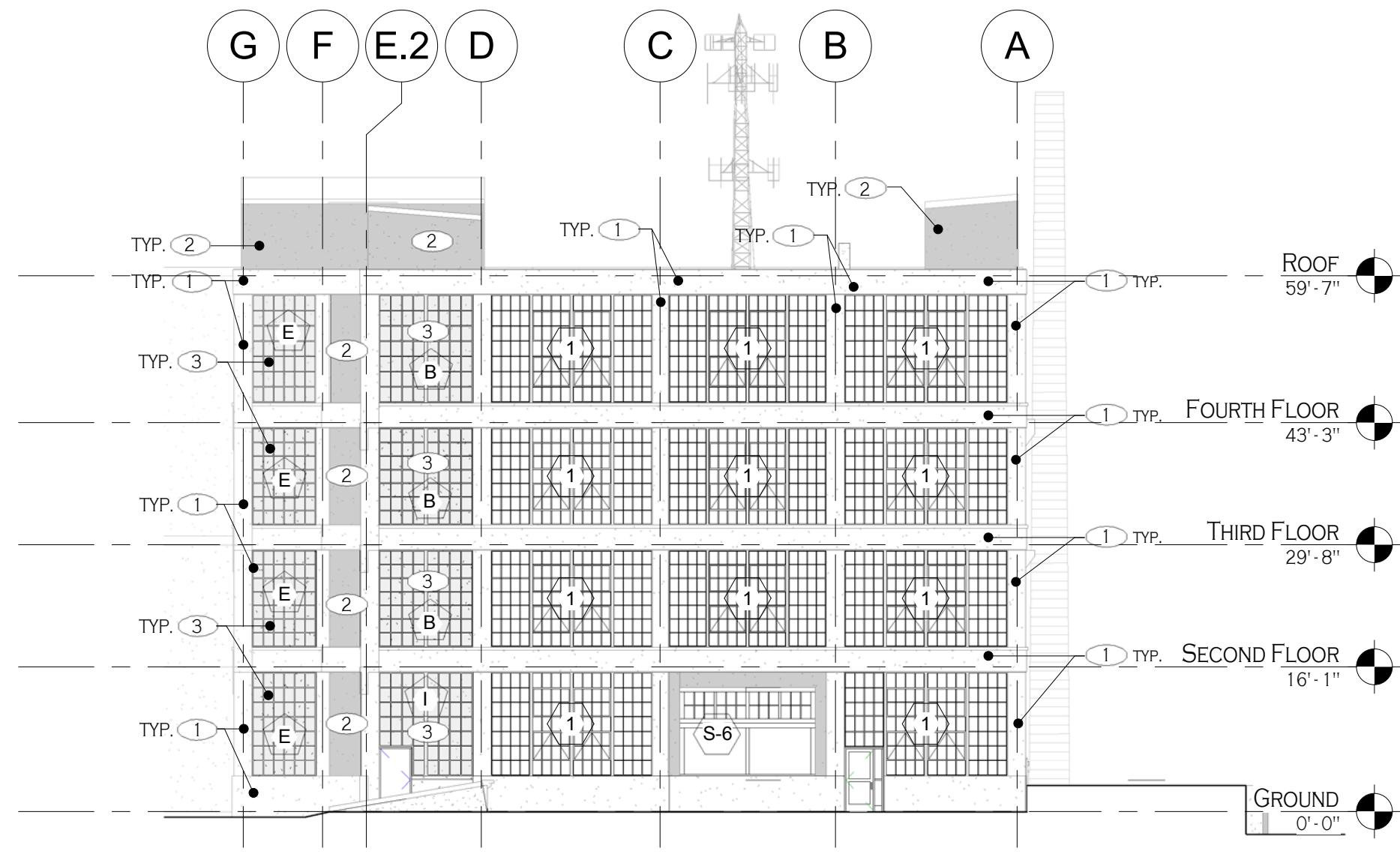
EXTERIOR FINISH SCHEDULE				
CALLOUT	SYMBOL ELEVATION	MATERIALS	DESCRIPTION	LOCATION
1		FINISHED EXPOSED CONCRETE	COLOR: STAIN TO BE SELECTED	SELECTED LOCATIONS
2		EXISTING CONCRETE	COAT WITH HIGH PERFORMANCE COATING COLOR: STAIN TO BE SELECTED	ALL EXISTING CONCRETE
3		E.F.I.S.	COLOR: PER SPEC	SELECTED LOCATIONS
4		GLASS	GLAZING: AS SPECIFIED COLOR: PER SPEC	EXTERIOR WINDOW GLAZING
5		SPANDREL GLASS	GLAZING: AS SPECIFIED COLOR: PER SPEC	SELECTED LOCATIONS

GENERAL ELEVATION NOTES

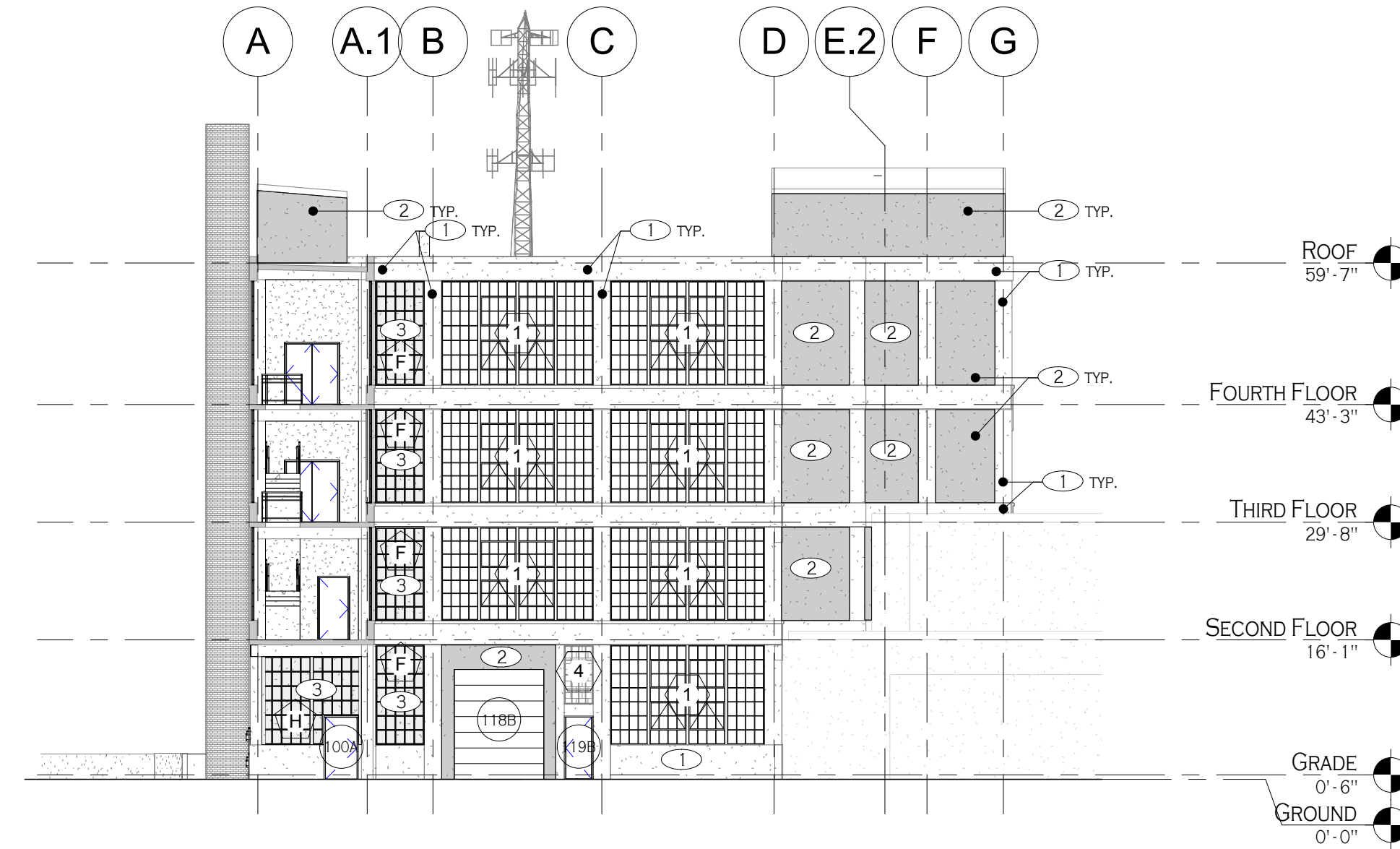
- REFERENCE DA500 AND SPECIFICATIONS FOR MASONRY RESTORATION GUIDELINES AND REGULATIONS.
- REFERENCE A-700 FOR WINDOW SCHEDULE AND DETAILS.
- REFERENCE SPECIFICATIONS FOR WINDOW REPLACEMENT GUIDELINES AND REGULATIONS.
- CLEAN EXISTING CONCRETE PER DEPARTMENT OF INTERIORS STANDARDS.
- REMOVE ALL LOOSE/CHIPPING/FLAKING PAINT FROM EXTERIOR CONCRETE AND PAINT ALL EXTERIOR CONCRETE WITH HIGH PERFORMANCE COATING AS SPECIFIED.

EXTERIOR MATERIAL NOTES

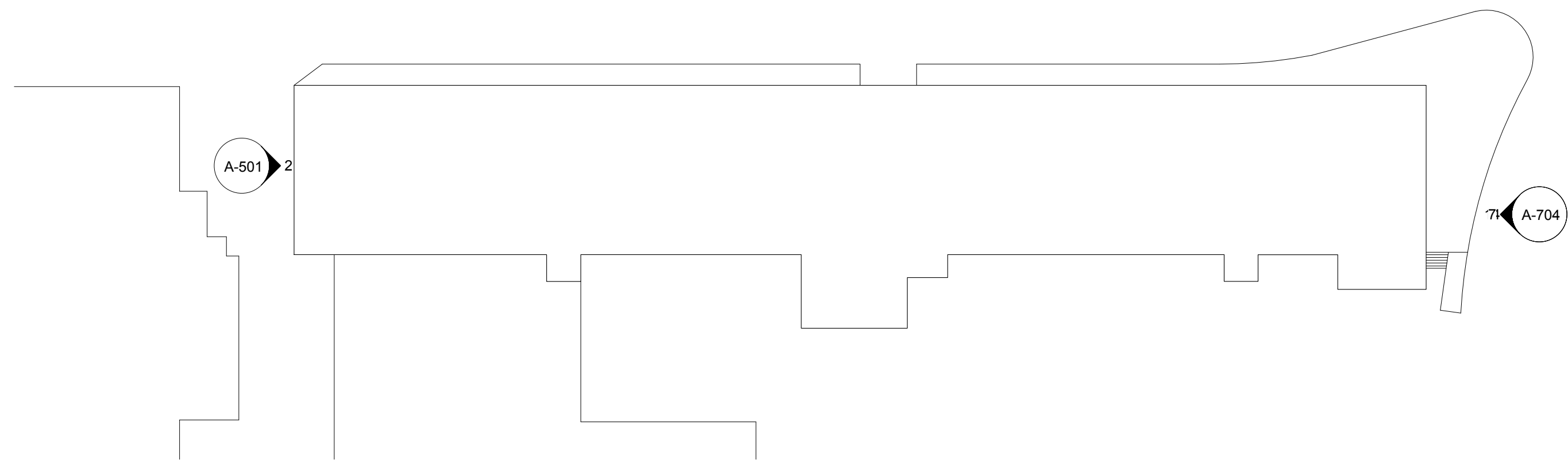
- IMPORTANT! BEFORE FINAL ORDERING OF MATERIALS, COORDINATE COLOR SCHEMES WITH ARCHITECT VIA USE OF EXTERIOR ELEVATIONS IN COLOR!
- REFER TO WRITTEN SPECIFICATIONS FOR FURTHER REQUIREMENTS FOR EACH EXTERIOR FINISH LISTED ABOVE, INCLUDING FINISHES FOR DOORS AND WINDOWS.
- ALL ADJACENT COPINGS, FLASHINGS AND TRIM SHALL MATCH MAIN FIELD COLOR AREA MATERIAL (U.N.O.). FINAL SELECTIONS SHALL BE BY ARCHITECT FROM PHYSICAL MATERIAL SAMPLES OF METAL FLASHINGS AND TRIM.
- ALL MATERIALS ON EXTERIOR FINISH SCHEDULE SHALL BE SELECTED FROM MANUFACTURER'S FULL RANGES OF COLORS UNLESS SPECIFICALLY NOTED OTHERWISE.
- ALL EXTERIOR DISSIMILAR MATERIALS SHALL BE CAULKED WEATHER TIGHT WITH SILICONE CAULK, COLOR MATCHED TO ADJACENT MATERIALS. CONTRACTOR SHALL COORDINATE ALL COLOR SELECTIONS OF CAULK TO BE USED ON THE JOB WITH THE ARCHITECT USING ELEVATIONS FOR LOCATION AND APPLICATION.
- ALL ITEMS MOUNTED AT EXTERIOR SHALL RECEIVE THE PROPER PREMANUFACTURED TRIM STONES (FOR ITEMS INCLUDING BUT NOT LIMITED TO LIGHT FIXTURES, ELECTRICAL OUTLETS, PLUMBING FIXTURES, ETC.) SOME ITEMS MAY NOT REQUIRE TRIM STONES IF BOXES ARE CONCEALED BEHIND FIXTURE MOUNTING EDGES.



1 EAST ELEVATION OVERALL
A-501 1/16" = 1'-0"



2 WEST ELEVATION OVERALL
A-501 1/16" = 1'-0"



N
ELEVATION KEY PLAN
1" = 40'-0"



Carmina Wood Morris
DPC

487 Main Street Suite 600
Buffalo, New York 14203
P 716.842.3165
F 716.842.0263

PRELIMINARY
NOT FOR CONSTRUCTION

2016_03_19

PROFESSIONAL SEAL

REVISIONS:	No.	Description	Date

PROJECT NAME:

Renovation to:
Pierce Arrow Building D
255 Great Arrow Avenue - Building D
Buffalo, New York

Issued for Construction: Issue Date
Municipality Submission: 06/28/17
Drawn By: Olivia Arcara
Checked By: Checker

DRAWING NAME:
Exterior
Elevations

DRAWING NO.

A-501

Project No: 17.002